



Surefix Pipe Supports and Hangers Catalog



surefix.biz



Surefix Pipe Hangers & Supports: Trusted Quality

Since its establishment Surefix has been a hallmark of excellence in providing premium-quality pipe hangers and support solutions. We take pride in delivering innovative and reliable solutions that cater to the dynamic requirements of the water, oil, gas, and HVAC sectors.

Surefix products are manufactured to the highest international standards and are approved by globally recognized agencies such as UL and FM. Designed to ensure durability, safety, and ease of installation, our range of pipe hangers and supports has become the preferred choice for clients across Saudi Arabia and the Middle East.

Sourced from cutting-edge manufacturing facilities across Europe, the USA, Japan, Korea, and other leading industrial nations, our products embody precision, reliability, and trust. Over the years, we have built enduring relationships with our clients, rooted in timely delivery, consistent quality, and superior service.

With a legacy of excellence and a vision for a sustainable future, Surefix continues to lead the industry, providing dependable solutions that meet and exceed customer expectations.

SUREFIX Human Resources Policy

At SUREFIX, we prioritize ethical practices, transparency, and zero tolerance for bribery, embedding these values in our operations. Committed to integrity and responsibility, our employees foster trust while respecting people, the environment, laws, and customers, ensuring sustainable and professional growth.



Design:

Provide Design & Engineering Solution to the construction sector, complying with international & local standards.



Manufacture:

Operating with Global Standards, we are widely recognized for our advanced light steel solutions and Hot-Dip



Trade:

Galvanization Facility.
We are one of the region's largest Importer/Exporter of Building & Construction Materials.



Our Vision

To be the leading industrial supplier and service provider in the Middle East, delivering innovative and sustainable solutions while building long-term value for our customers, partners, and communities.

Our Mission

To provide high-quality products and reliable services in the fields of water, oil, gas, and HVAC, ensuring customer satisfaction through innovation, integrity, and operational excellence, while fostering a culture of trust, reliability, and continuous improvement.

OUR QUALITY, ENVIRONMENT AND OHS POLICY

At SUREFIX, we are dedicated to meeting the highest standards of quality, safety, reliability, and environmental stewardship to fulfill the needs and expectations of our customers and the global community.

We strive to continuously innovate, enhance customer satisfaction, and meet demands at the highest level of excellence.

Our operations respect and prioritize environmental sustainability, ensuring all processes align with legal requirements and international standards where we operate.

By optimizing resources, addressing root causes of inefficiencies, reducing waste, and controlling costs, we aim for maximum operational efficiency.

We commit to advancing the pipe hangers and supports sector by adopting innovations in our systems, products, and processes, ensuring we remain a leader in the global market.

At SUREFIX, this policy reflects our commitment to excellence and sustainability, and we are dedicated to its full implementation in all that we do.

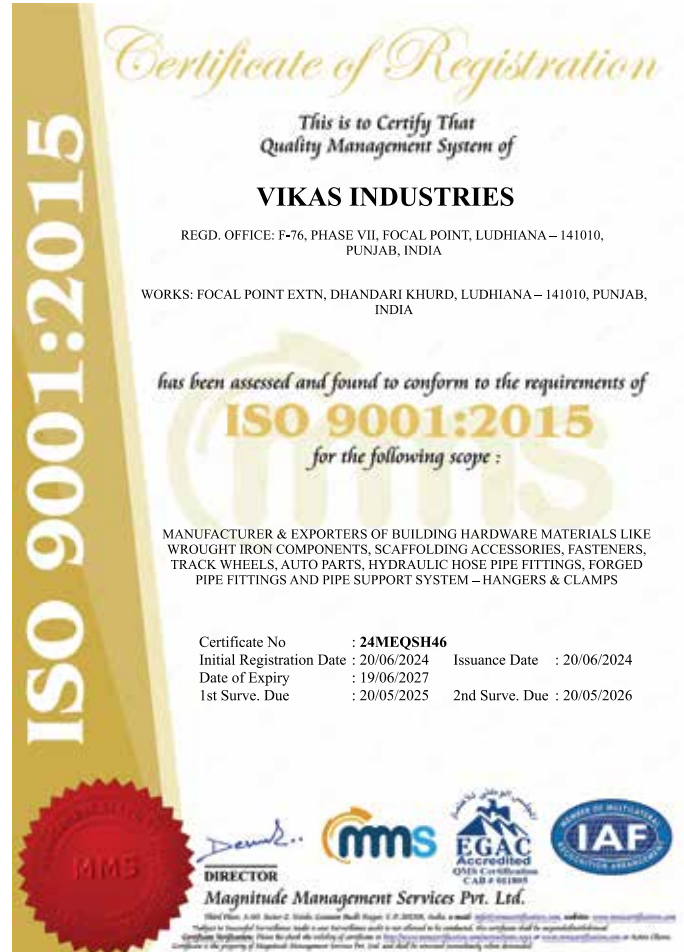
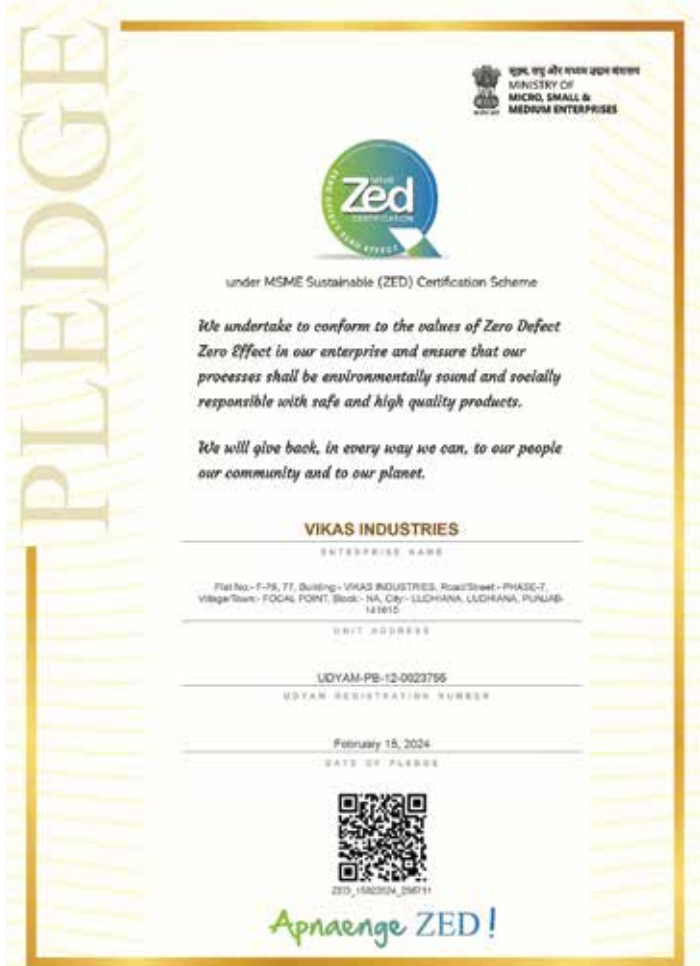


SUREFIX Human Resources Policy

At SUREFIX, we prioritize ethical practices, transparency, and zero tolerance for bribery, embedding these values in our operations. Committed to integrity and responsibility, our employees foster trust while respecting people, the environment, laws, and customers, ensuring sustainable and professional growth.



Certifications



Q28827 : EX28827/2024/124
P/N NO : 8887562354



VIKAS INDUSTRIES
MANUFACTURERS & EXPORTERS
EXPORT ORIENTED UNIT
F-76, Phase VII, Focal Point, Ludhiana (Punjab)
Phone: 91 (0) 181-60-1574, 181-60-1575
Mobile: +91 98140-0574, 181-60-1575
E-mail: cheng234@gmail.com, vikasindustries77@gmail.com
Website: www.vikasindustries.co, www.vikasindustrial.co

REFERENCE NO. V/HR/23-24/120

DATED 27.03.2024

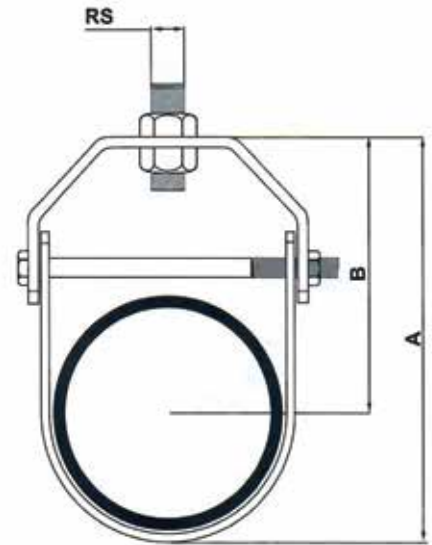
TO WHOM IT MAY CONCERN

We, on the behalf of VIKAS INDUSTRIES a UL Listed company EX28827 hereby confirm that we are having a Registered Trademark of VI – SUREFIX Registered with UL Underwriter Laboratories – 333, Plingsten Rd, Northbrook, IL 60062, UNITED STATES for selling the product.



Thanks and Best Regards
For VIKAS INDUSTRIES
Shivam Arora
Auth. Signatory
Authorized Signatory
VIKAS INDUSTRIES





CONSTRUCTION: Clevis Hanger is a combination of two clevises U & V attached together with the help of cross bolt and a nut

APPLICATION: It is used for suspension of non-insulated, stationary pipelines with a generous range of 20 to 150mm, Clevis Hanger provides flexibility in accommodating different pipe heights and alignment requirements.

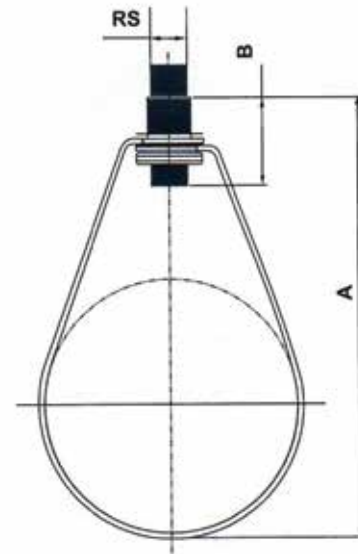
Clevis Hanger allows for precise vertical adjustment of pipes even after installation. This feature enables fine tuning of the pipe's position to ensure optimal alignment and support.

APPROVALS: Underwriters Laboratories U.L., U.L.C. listed (Size: 1" to 8")

COMPLIANCE: ANSI / CAN/UL 203:2020(Ref. ASTM A653M, NFPA13, UL 2043)

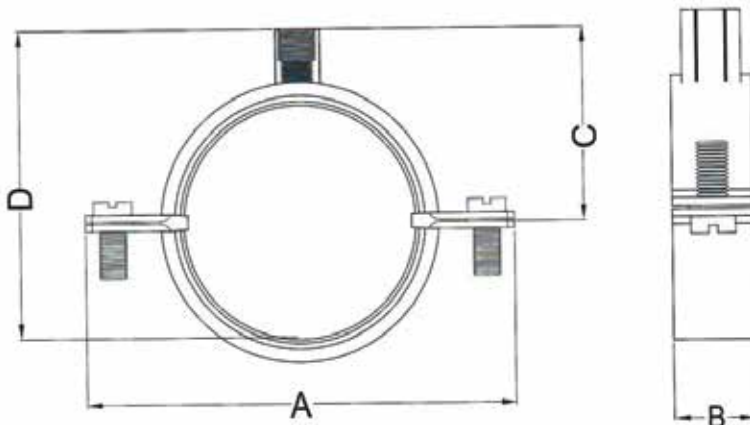
MATERIAL: Mild Steel - **FINISH:** Electro Galvanized as per ASTM B 633

Nominal Pipe Size (inch)	Diameter (D) MM	Hanger Rod Size (MM)	Height (H)	Top Hole S (MM)	Cross Bolt	Max Load (Kg.)
1"	34	M10	76	11	M8	350
1-1/4"	42	M10	87	11	M8	350
1-1/2"	48	M10	97	11	M8	350
2"	60	M10	114	11	M8	350
2-1/2"	75	M12	142	13	M10	780
3"	89	M12	165	13	M10	780
3-1/2"	102	M12	190	13	M10	780
4"	115	M12	202	13	M10	780
5"	142	M12/M16	231	13/17	M12	1300
6"	168	M12/M16	278	13/17	M12	1300
8"	219	M12/M16	336	13/17	M12	2100



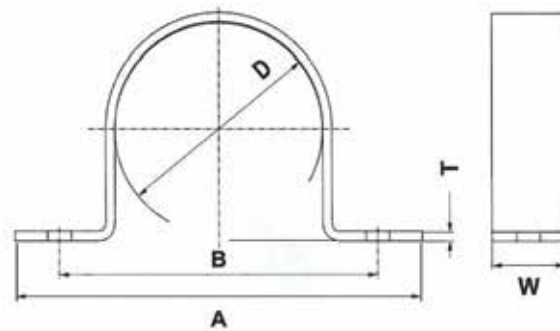
- Adjustable Swivel Ring Hangers
- Material Carbon Steel
- Size Range ½" through 8"
- Finish: Zinc Colored Epoxy Plated
- UL & FM Approved
- Comply with Federal Specification WW-H-171E and American Manufacturers Standardization Society MSS SP-69 & SP58

Nominal Pipe Size	Max. Rec. Load		Rod Size (RS)		A		B	
	IBS	KG	IN	MM	IN	MM	IN	MM
½	300	136	3/8	M10	2 5/6	72	1	25
¾	300	136	3/8	M10	3	76	1	25
1	300	136	3/8	M10	3 5/7	94	1	25
1 ¼	300	136	3/8	M10	4	99	1	25
1 ½	300	136	3/8	M10	4 2/7	108	1	25
2	1000	454	3/8	M10	5 ¼	141	1 ¼	32
3	1000	454	3/8	M10	6 3/8	162	1 ¼	32
3 ½	1000	454	3/8	M10	7	179	1 ¼	32
4	1100	499	3/8	M10	7 2/3	195	1 5/16	33
5	1100	499	½	M12	9	229	1 5/16	33
6	1250	567	½	M12	10 ½	267	1 9/16	40
8	1250	567	½	M12	12 1/2	318	1 5/8	41



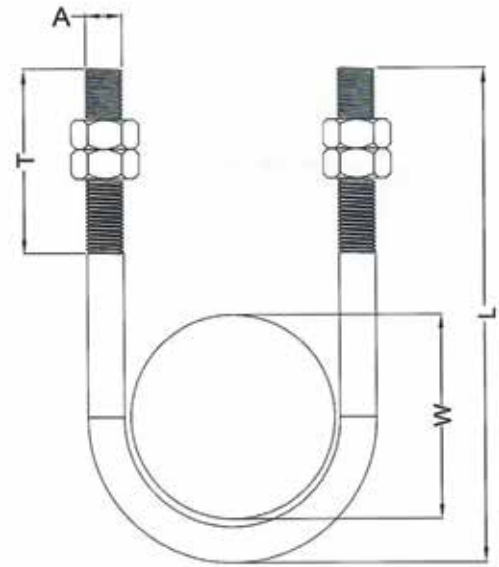
- EPDM Rubber Insulation For Noise Reduction Complaint with DIN 4109
- Material Carbon Steel
- Size Range 3/8" through 8"
- Finish Electro Zinc Plated
- M6 Side Screws With Two Pieces of Gasket
- M8 M10 and M10+M12 Nut is optional

Nominal Pipe Size			Max. Rec. Load		Rod Size	A		B		C		D	
IN	MM		IBS	KG	MM	IN	MM	IN	MM	IN	MM	IN	MM
3/8"	Ø18	15-19	440	200	M8/M10	2 1/3"	60	4/5"	20	1"	26	1 3/7"	36
1/2"	Ø22	20-25	440	200	M8/M10	2 5/9"	65	4/5"	20	1 1/7"	29	1 2/3"	43
3/4"	Ø28	26-30	440	200	M8/M10	2 3/4"	70	4/5"	20	1 1/4"	32	2"	50
1"	Ø35	32-36	440	200	M8/M10	2 1/3"	85	4/5"	20	1 3/7"	36	2 1/5"	56
1-1/4"	Ø42	38-43	440	200	M8/M10	3 5/8"	92	4/5"	20	1 1/2"	39	2 1/2"	63
1-1/2"	Ø48	47-51	440	200	M8/M10	3 6/7"	98	4/5"	20	1 2/3"	42	2 5/6"	72
1-1/2"	Ø54	53-58	440	200	M8/M10	4"	104	4/5"	20	1 7/9"	45	3"	75
2"	Ø60	60-64	440	200	M8/M10	4 1/3"	110	4/5"	20	1 8/9"	48	3 1/5"	81
2"	Ø63	63-66	440	200	M8/M10	4 1/2"	115	4/5"	20	2"	51	3 1/2"	88
2"	Ø70	68-72	440	200	M8/M10	4 5/7"	120	4/5"	20	2"	53	3 4/7"	91
2-1/2"	Ø75	75-80	440	200	M8/M10	5"	125	4/5"	20	2 1/5"	56	3 7/9"	96
2-1/2"	Ø83	81-86	440	200	M8/M10	5 1/2"	139	4/5"	20	2 1/3"	60	4 1/4"	108
3"	Ø90	87-92	440	200	M8/M10	5 3/4"	146	4/5"	20	2 1/2"	63	4 3/8"	111
3-1/2"	Ø100	99-105	440	200	M8/M10	6 1/7"	156	4/5"	20	2 3/8"	68	4 3/4"	121
3-1/2"	Ø110	109-112	440	200	M8/M10	6 1/2"	166	4/5"	20	2 7/8"	73	5 1/6"	131
4"	Ø115	113-118	440	200	M8/M10	6 3/4"	171	4/5"	20	3"	76	5 1/3"	136
4"	Ø125	125-130	440	200	M8/M10	7 1/8"	181	4/5"	20	3 1/5"	81	5 3/4"	146
4"	Ø133	132-137	440	200	M8/M10	7 1/4"	184	4/5"	20	3 1/3"	85	6 1/9"	155
5"	Ø140	138-142	660	299	M8/M10	7 5/7"	196	4/5"	20	3 1/2"	89	6 1/3"	161
5"	Ø150	148-152	660	299	M8/M10	8 1/9"	206	4/5"	20	3 2/3"	93	6 3/4"	171
5"	Ø160	159-166	660	299	M8/M10	8 1/2"	216	1"	25	3 6/7"	98	7 1/8"	181
6"	Ø168	168-172	660	299	M8/M10	8 5/6"	224	1"	25	4"	102	7 4/9"	189
6"	Ø200	200-212	660	299	M8/M10	10"	256	1"	25	4 2/3"	118	8 5/7"	221
8"	Ø220	215-220	660	299	M8/M10	10 6/7"	276	1"	25	5"	128	9 1/2"	241
8"	Ø250	248-252	660	299	M8/M10	12"	306	1"	25	5 5/8"	143	10 2/3"	271
8"	Ø315	313-318	660	299	M8/M10	14 3/5"	371	1"	25	7"	176	13 2/9"	336



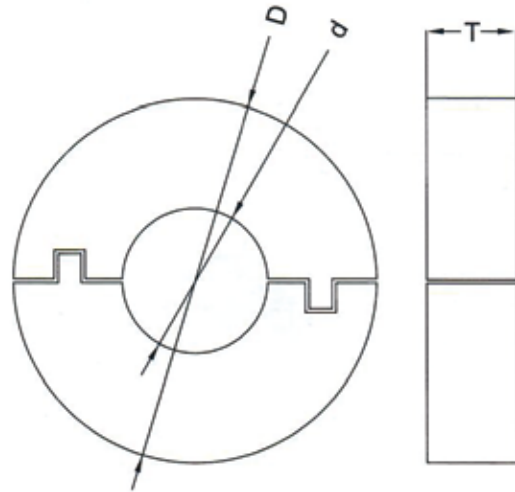
- Material: Steel
- Size Range 1/2" through 24"
- Finish Electro Zinc Plated or Epoxy Coating
- M6 Side Screws With Two Pieces of Gasket
- Designed And Recommended For The Mounting Of Insulated Or Non-Insulated Pipes And Can Be Used With Rubber Supports Inserts
- Comply With Federal Specification WW-H-171E And American Manufacturers Standardization Society MSS SP 69 & SP58

Nominal Pipe Size	Max. Rec. Load		Belt Size (RS)	D		B		A		T		W	
	IBS	KG		MM	KG	IN	MM	IN	MM	IN	MM	IN	MM
1/2"	550	249	M8	6/7	22	2	51	3 2/9	76	1/8	3	1	25
3/4"	550	249	M8	1 1/9	35	2 1/2	64	3 1/2	89	1/8	3	1	25
1"	550	249	M8	1 3/8	42	2 4/5	71	3 7/9	96	1/8	3	1	25
1-1/4"	550	249	M8	1 2/3	42	2 4/5	71	3 7/9	96	1/8	3	1	25
1-1/2"	550	249	M8	1 8/9	48	3 1/4	83	4	102	1/8	3	1	25
-	550	249	M8	2 1/8	54	3 1/4	83	4 1/4	108	1/8	3	1	25
2"	650	295	M8	2 2/3	68	3 5/6	97	4 4/5	122	1/8	3	1	25
2-1/2"	650	295	M8	3 1/5	81	4 2/3	112	5 2/3	144	1/8	3	1	25
-	650	295	M8	3 1/5	90	5	128	6	160	1/8	3	1	25
3"	650	295	M8	3 1/2	90	5	128	6	160	1/8	3	1	25
3-1/2"	650	295	M8	3 7/9	96	5 2/7	134	6 1/2	166	1/8	3	1	25
-	650	295	M8	4 1/4	108	5 3/4	146	6 3/4	178	1/8	3	1	25
4"	650	295	M8	4 3/4	121	6 1/4	159	7 1/2	191	1/8	3	1	25
-	650	295	M10	4 7/8	124	6 3/8	162	7 2/3	194	1/8	3	1	25
-	650	295	M10	5 1/6	131	6 2/3	169	8	201	1/8	3	1	25
5"	650	295	M10	5 2/5	137	6 8/9	175	8 1/7	207	1/8	3	1	25
-	650	295	M10	5 6/7	149	7 1/3	187	8 5/8	219	1/8	3	1 1/2	38
-	650	295	M10	5 1/2	140	7	178	8 1/4	210	1/8	3	1 1/2	38
-	650	295	M10	5 3/4	146	7 1/4	184	8 1/2	216	1/8	3	1 1/2	38
-	650	295	M10	6 2/9	158	7 5/7	196	9	228	1/8	3	1 1/2	38
6"	650	295	M10	6 3/8	162	7 7/8	200	9 1/7	232	1/8	3	1 1/2	38
-	650	295	M10	7 4/9	189	9	227	10 1/5	259	1/8	3	1 1/2	38



- Material: Carbon Steel
- Size Range: 1/2" through 24"
- Finish: Electro-zinc Plated
- Pipe Support for General Piping Application
- Supplied with Four Nuts

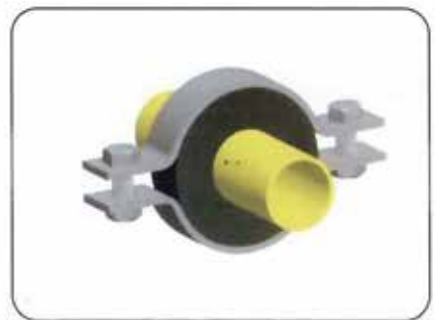
Nominal Pipe Size	A		W		L		T		Max. Rec. Load	
	IN	MM	IN	MM	IN	MM	IN	MM	IBS	KG
1/2"	3/8	M10	5/6	21	2 5/9	65	2	50	6500	2948
3/4"	3/8	M10	1	27	3	77	2	50	6500	2948
1"	3/8	M10	1 1/3	34	1 1/3	85	2	50	6500	2948
1-1/4"	3/8	M10	1 2/3	43	2 2/3	93	2	50	6500	2948
1-1/2"	3/8	M10	1 8/9	48	4	100	2	50	6500	2948
2"	1/2	M12	2	60	5	127	2	50	9500	4309
2-1/2"	1/2	M12	3 1/2	89	5 1/2	140	2	50	9500	4309
3"	1/2	M12	4 1/2	115	6 1/2	165	2	50	9500	4309
4"	1/2	M12	5 1/2	140	7 1/2	190	2	50	9500	4309
5"	1/2	M12	6 1/2	165	8 2/3	220	2	50	9500	4309
6"	5/8	M16	8 2/3	220	11 3/5	295	3	75	18000	8165
8"	5/8	M16	8 5/8	219	14 4/7	370	4	100	28000	12701
10"	3/4	M20	10 3/4	273	16 1/2	420	4	100	28000	12701
12"	7/8	M20	12 3/4	324	18	455	4	100	28000	12701
14"	7/8	M20	14	356	19 7/8	505	4	100	28000	12701
16"	7/8	M20	16	406	21 6/7	555	4	100	28000	12701
18"	1	M24	18	457	23 5/6	605	4	100	40000	18144
20"	1	M24	20	508	28	710	4	100	40000	18144
24"	1	M24	24	610	28	710	4	100	40000	18144



Standard Width for Rubber Support Inserts

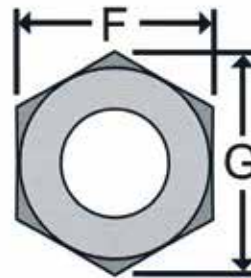
1/2" to 2"	- 25mm
2-1/2" to 5"	- 38mm
6" to above	- 50mm

- Material: Compounded Rubber
 - Density: 1400kg/M³
 - Thermal Conductivity: 0.16W/M°C
 - Temperature Range: -20°C to 110°C
 - Very High Load Bearing Capacity
 - Tongue And Groove Design For Small Size
 - Excellent Resistance To Deterioration Or Distortion
 - Used At The Supporting Points Of Insulated Pipes To Prevent Crushing Of Insulation
- Different Thickness (T) is available (13mm, 19mm, 25mm, 50mm)





Hex Nut



Size Range	:	4mm through 24mm
Material	:	Carbon Steel; DIN 934, Grade 4.8
Finish	:	Electro Zinc Plated
Max Temperature	:	750 Deg. F

Heavy Hex Nuts - DIN 934, Grade 4.8

Nominal or Basic Major Thread		F			G			H	
Diameter		Width	Across	Flat	Width	Across	Corner	Thickness	
		IN	IN	MM	MAX	MIN	BASIC	MAX	MIN
4 mm	0.2500	1/2	0.500	0.488	0.556	0.557	15/64	0.218	0.250
6 mm	0.3125	9/16	0.562	0.546	0.622	0.650	19/64	0.280	0.314
8 mm	0.3750	11/16	0.688	0.669	0.763	0.794	23/64	0.341	0.377
10 mm	0.4375	3/4	0.750	0.728	0.830	0.866	27/64	0.403	0.441
12 mm	0.5000	7/8	0.875	0.850	0.969	1.010	31/64	0.464	0.504
14 mm	0.5625	15/16	0.938	0.909	1.037	1.083	35/64	0.526	0.568
16 mm	0.6250	1 1/16	1.062	1.031	1.175	1.227	39/64	0.587	0.631
24 mm	1.0000	1 5/8	1.325	1.575	1.796	1.876	63/64	0.956	1.012

- Measurements are Subject to 5% Tolerance
- Due to Continuous improvement, product Specifications are subject to change without prior notice



Galvanized Full Threaded Hex Bolt

- Size : 6 mm to 52 mm
- Length : Minimum 12 mm - Maximum 120 mm
- Material : Galvanized steel
- Thread Type : UNF (Fine Thread)
- Grade : 4.8 (ASTM - A307 - B, A325, G5)
- Standard: DIN-931&933



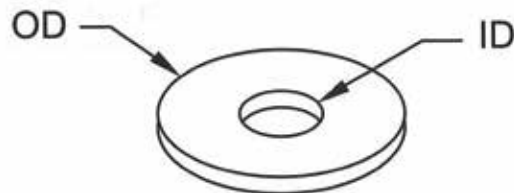
Galvanized Half Threaded Hex Bolt

- Size : 4mm to 52 mm
- Length : Minimum 2 1/2 Inch - Maximum 16 Inch
- Material : Galvanized Steel
- Thread Type : UNC (Course Thread)
- Grade : 4.8 (ASTM - A307 - B, A325, G5)
- Standard : DIN-931&933



Flat Washer

Size Range	:	6 mm throgh 24mm
Material	:	Carbon Steel; DIN 9021, Grade 4.8
Finish	:	Electro Zinc Plated
Max Temperature	:	750 Deg. F



Rod Size (mm)	6 mm	8 mm	10 mm	12 mm	16 mm	18 mm	20 mm	24 mm
I.D. (inches)	5/16	7/16	9/16	11/16	13/16	15/16	1 1/16	1 1/4
O.D. (inches)	3/4	1	1 3/8	1 3/4	2.000	2 1/4	2 1/2	2 3/4

- Measurements are Subject to 5% Tolerance
- Due to Continuous improvement, product Specifications are subject to change without prior notice

MATERIAL:- STEEL, OTHER MATERIALS ON REQUEST

DESCRIPTION:- Universal rail system. With continuous perforation (on request without perforation).

Distance between rail end and first hole is always equal.

A continuous graduated centimetre scale on one side.

Yield strength 240 N/mm².

Tested for fire safety.

SPECIAL: Electro galvanized as per ASTM B 633.

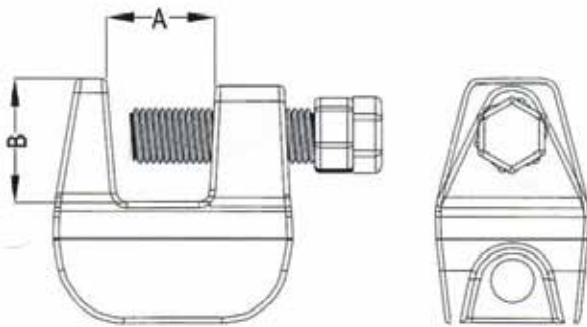
Galvanized as per ASTM A 123 / A 123M.



STRUT CHANNEL

W (mm)	Size H (mm)	T (mm)	Length L (mtr.)	S (mm)	Bundle Quantity (Pcs)
41.00	21	1.5	2, 3, or 6	22	12
41.00	41	1.5	2, 3, or 6	22	8
41.00	21	2.0	2, 3, or 6	22	12
41.00	41	2.0	2, 3, or 6	22	8
41.00	21	2.5	2, 3, or 6	22	12
41.00	41	2.5	2, 3, or 6	22	8

Product Code	Unit	21-1.5	41-1.5	21-2	41-2	21-2.5	41-2.5
Area of Shear	cm ²	0.42	1.02	0.55	1.34	0.67	1.67
Moment of Inertia (xx)	cm ⁴	0.70	3.87	0.88	4.59	1.03	5.87
Moment of Inertia (yy)	cm ⁴	3.34	5.68	4.25	6.99	5.07	8.76
Min. Section Modulus	cm ³	0.60	1.76	0.75	2.18	0.89	2.72
Warping Constant	cm ⁶	17.49	114.17	21.34	138.49	24.34	171.52
Torsional Constant	cm ⁴	0.01	0.02	0.02	0.03	0.06	0.07
Allowable Bending Stress	kN/cm ²	21.82	21.82	21.82	21.82	21.82	21.82
Allowable Shear Stress	kN/cm ²	12.60	12.60	12.60	12.60	12.60	12.60
Modulus of Elasticity	kN/cm ²	21.00	21.00	21.00	21.00	21.00	21.00



- **Material:** Malleable Iron
- **Finish:** Zinc Plated
- Designed for Attaching a Hanger Rod to the Top or Bottom of a Bar Joint or Other Structural Shapes
- Pipe Support for General Piping Application
- Supplied with Four Nuts

TOP BEAM CLAMP

RS	A	B	Set Screw	Max. Rec. Load (lbs) – Top	Max. Rec. Load (lbs) – Bottom
3/8"	3/4	1 1/8	3/8	500.00	250.00
1/2"	3/4	1 1/8	7/16	950.00	960.00

DROP IN ANCHOR

Application: Drop-in anchors are internally threaded, deformation controlled expansion anchors with a preassembled expander plug, suitable for flush mount applications in solid base materials.

Size Range: 6mm through 24 mm

Material: Carbon Steel Grade 4.8

Finish: Electro-Zinc Plated

Max. Temperature: 750 Deg F



Anchor Size	Drilling Depth (mm)	Drilling Diameter (mm)	Max. Rec. Load (kN)
6 mm	29.00	8	3.20
8 mm	30.00	10	4.20
10 mm	40.00	12.00	6.80
12 mm	50.00	16.00	8.00
16 mm	65.00	20.00	10.80
20 mm	80.00	24.00	12.80
24 mm	95.00	28.00	14.80



THREADED ROD

MATERIAL:- MILD STEEL

APPLICATION:- THREADED RODS ARE USED WHEREVER A FASTENER OF RIGIDITY AND GREAT LENGTH IS REQUIRED TO ATTACH TWO ITEMS TOGETHER. THEIR THREADING HELPS IN ATTACHING NUTS TO THE RODS AS NEEDED.

FINISH:- PLAIN, ELECTRO GALVANIZED, HOT DIP GALVANIZED.

STANDARDS:- DIN 975 / DIN 976

DIAMETER - METRIC M6 TO M48, AVAILABLE IN BSP THREAD ALSO



Size	Thread Pitch (mm)
M6	1
M8	1.25
M10	1.5
M12	1.75
M14	2
M16	2
M18	2.5
M20	2.5
M22	2.5
M24	3
M27	3
M30	3.5
M33	3.5
M36	4
M39	4
M42	4.5
M45	4.5
M48	5

APPLICATION:- Designed to provide a means of connection two lengths of rod with equal diameters.

Size Range:- 6 mm through 20 mm.

Material:- Carbon Steel

Finish - Electro Zinc Plated

Max Temp: - 750 Deg F

ROD SIZE	LENGTH	HEX WIDTH	MAX. REC. LOAD (lbs)	WT. EACH (IN lbs)
6 mm	7/8	3/8	230.00	0.06
8 mm	1 3/4	5/8	730.00	0.11
10 mm	1 3/4	11/16	1350.00	0.11
12 mm	2 1/8	13/16	1810.00	0.17
16 mm	2 1/4	1.00	2710.00	0.28
18 mm	2 1/2	1 1/4	3770.00	0.56
20 mm	2 3/4	1 3/8	4960.00	0.72



ROD COUPLING

Surefix Pipe Supports and Hangers Catalog

CONTACT

+91 9747540008
info@surefix.biz

FIND MORE
INFORMATION



Opp. Govt College of Engineering,
Dharmasala, Parassinikkadavu,
Kannur, Kerala, 670563